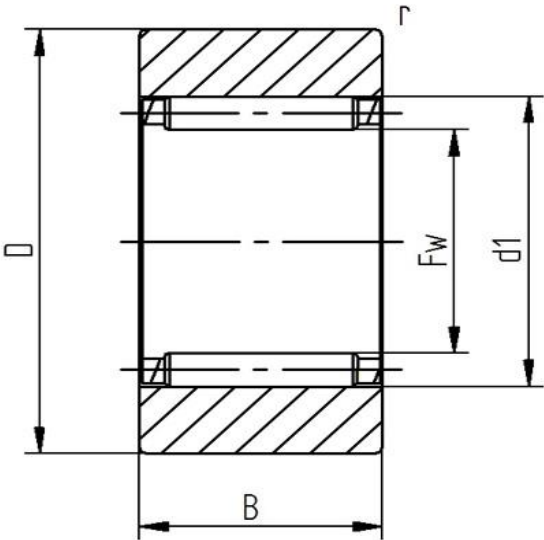


Data sheet - Support roller RSTO 8TN X (cylindrical)

Designation	RSTO 8TN X
Type	cylindrical
D [mm]	24
d [mm]	
F, Fw * [mm max.]	12
B1 [mm]	
B [mm]	9,8
d1 [mm]	15
r [mm]	0,3
Dynamic load Crw [N]	4200
Static load C0rw [N]	5500
Speed limit [min-1]	16000



Every specification has been edited and verified carefully. STI Bearings GmbH assumes no liability for potential errors or incompleteness. Technical modifications are subject of changes.
© 2020 by STI Bearings GmbH
Reproduction, even excerpts, only with our approval.